

VRF RANGE

CRÉATEUR DE SOLUTIONS ÉNERGÉTIQUES INTELLIGENTES

Airwell

OUTDOOR UNITS

Airwell

CREATOR
OF SMART ENERGY
SOLUTIONS

Airwell

YEVFD BECOMES VVFA - 2 PIPES – FRONT DISCHARGE

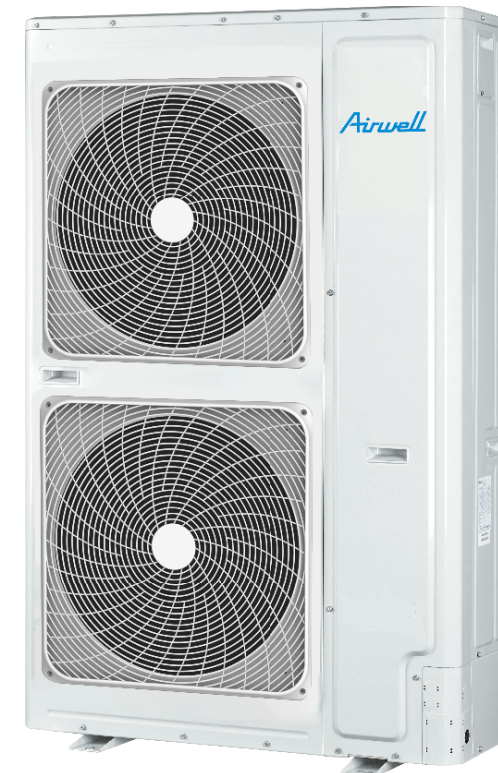
FEATURES

- Front blow
- Up to 300 meters of tubes
- 50 meters of vertical drop

Cooling	Heating
12,5 to 31,5 kW	14 à 31,5 kW
4 à 12 CV	4 à 12 CV
-5°C/48°C	-20°C/27°C
SEER up to 8,5 337%	SCOP up to 5 197%

+ PRODUCTS

- Increased energy performance
- New Twin Rotary compressor
- New heat exchanger
- Compatible with new AHU kit (signal 0-10V)
- Compatible Airwell Connected Solutions



YEV BECOMES VVTA - 2 PIPES – TOP DISCHARGE

FEATURES

- EVI Compressors
- Continuous heating
- Available pressure of 110 Pa
- Up to 1000 meters of tubes
- 110 meters of vertical drop

+ PRODUCTS

- **Coupling up to 4 outdoor units**
- **Automatic oil balancing (no balancing tube)**
- **Modbus gateway integrated**
- **Compatible with new AHU kit (signal 0-10V)**
- **Compatible Airwell Connected Solutions**

Cooling	Heating
25 - 294 kW	25 - 294 kW
8 - 104 HP	8 - 104 HP
-5°C/52°C	-27°C/21°C
SEER up to 7,25	SCOP up to 4,61

NOUVEAU



Airwell

YEV-HR BECOMES VVEA - 3 PIPES - ENERGY RECOVERY

FEATURES

- EVI Compressors
- Valves Boxes with EEV for better regulation
- Available pressure of 110 Pa
- Up to 1000 meters of tubes
- 110 meters of vertical drop

+ PRODUCTS

- **Coupling up to 4 outdoor units**
- **Automatic oil balancing (no balancing tube)**
- **Modbus gateway integrated**
- **Compatible with new AHU kit (signal 0-10V)**
- **Compatible Airwell Connected Solutions**

Cooling	Heating
28 - 252 kW	28 - 252 kW
10 - 88 HP	10 - 88 HP
-5°C/50°C	-23°C/21°C
SEER up to 6,32	SCOP up to 4,12

NOUVEAU



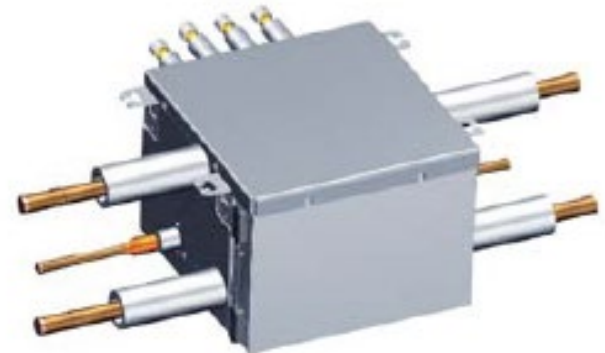
Airwell

NEW VALVES BOXES

Model name	Max IDU capacity(KW)	Max IDU quantity	Dimensions
Kit VVEA HR112	≤ 11.2	5	388*200*277
Kit VVEA HR180	$11.2 < x \leq 18$	8	388*200*277
Kit VVEA HR280	$18 < x \leq 28$	8	388*200*277
Kit VVEA HR450-4	≤ 45	20	405*300*421



Model name	Total of four branches		Each of the branch	
Kit VVEA HR 450 - 4 outlets	Total capacity of IDU	IDU Quantity	Total capacity of IDU	IDU Quantity
	$\leq 45\text{KW}$	≤ 20	$\leq 11.2\text{KW}$	≤ 5



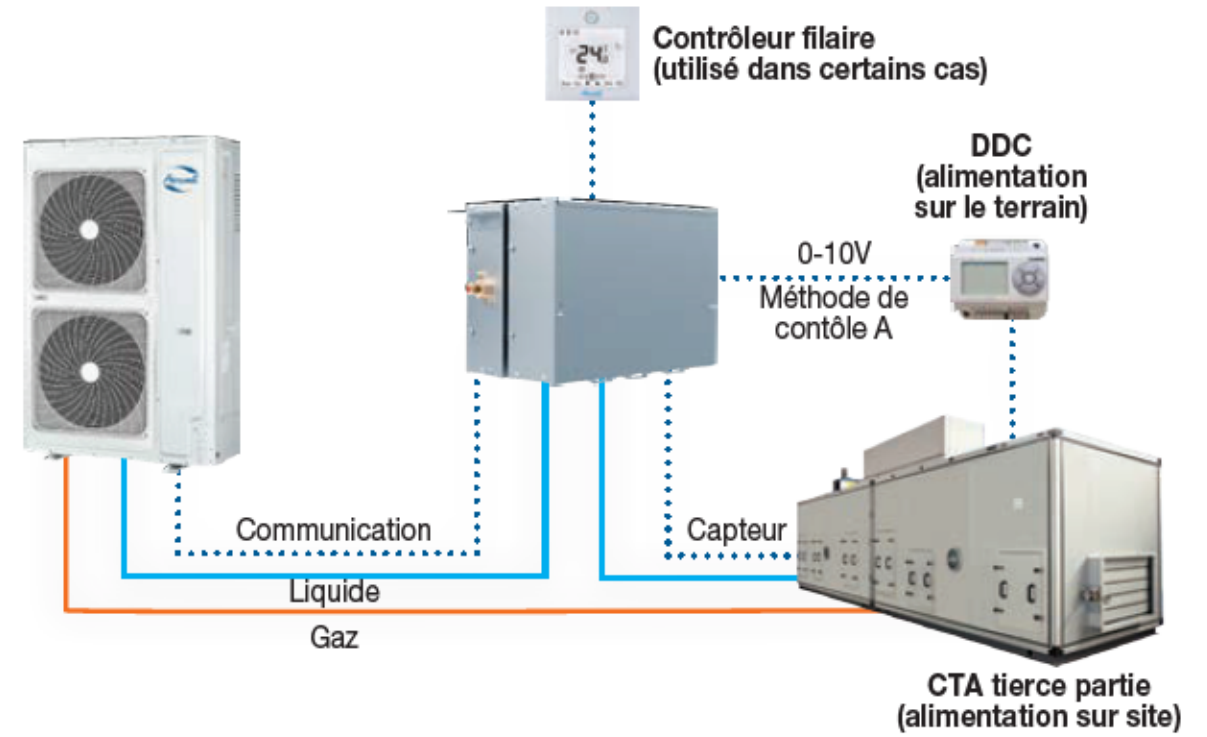
NEW AHU KIT



The AHU kit allow to connect the Airwell VRF to the AHU DX coil.

+ PRODUCTS

- 4 possible control methods.
- Compatible with VVFA and VVTA
- Up to 4 kit can be connected on the same system to increase the capacity



FEATURES

Model Kit AHU 7/14/28/56/73 kW a complete offer for all powers.

Application: Hotels, offices and buildings where fresh air is needed.

INDOOR UNITS

Airwell

CREATOR
OF SMART ENERGY
SOLUTIONS

Airwell



HBV becomes HVVA

Cooling	Heating
2,2 to 7,1 kW	2,5 to 8 kW



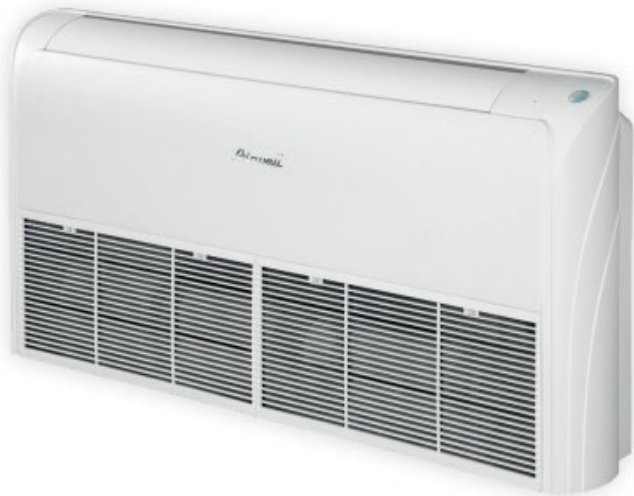
CBV becomes CVQA (600x600)

Cooling	Heating
1,5 to 4,5 kW	1,7 to 5 kW



CFV becomes CVTA (900x900)

Cooling	Heating
4,5 to 16 kW	5 to 18 kW



FAV becomes FVVA

Cooling	Heating
3,6 to 14 kW	4 to 16 kW



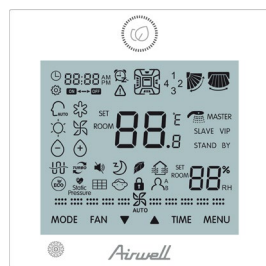
DDV becomes DVLA

Cooling	Heating
2,2 to 4,5 kW	2,5 to 5 kW



DBV becomes DVMA

Cooling	Heating
5,6 to 11,2 kW	6,3 to 13 kW



Remote controls included

DCV becomes DVHA

Cooling	Heating
9 to 28 kW	10 to 31,5 kW

EAV becomes XVVA

Cooling	Heating
2,8 to 5 kW	3,2 to 5,5 kW

CENTRALIZED CONTROLS

Airwell

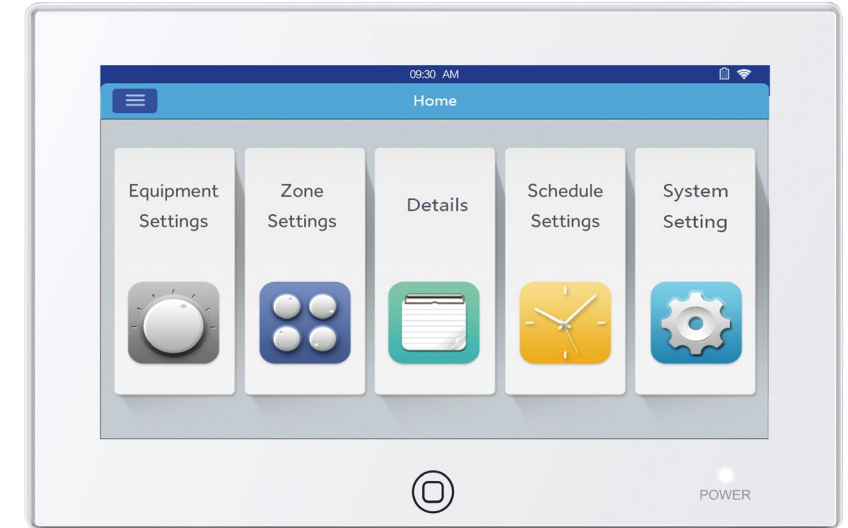
CREATOR
OF SMART ENERGY
SOLUTIONS

Airwell

CENTRALIZED CONTROLLER RWV06

FEATURES

- 7 inch LCD touch screen
- Operation functions (mode, set point, fan speed, ON/OFF)
- Monitoring (error codes, running time, sensors reading)
- Timer function (daily, weekly)
- Setting (screen saving, child lock, back light)



+PRODUCT

- Up to 256 indoor units
- Individual, zones or all units management
- 3 possible priority managements (LIFO, central, lock)
- Maxi/Mini temperatures lock
- Output Modbus RTU

	User Name	Device Addr	Ambient Temp.	Mode	Fan Speed	Gas Pipe Temp.	Liquid Pipe Temp.	Running Time	Error Code
001	26-1	26-1	20	Heat	Auto	25	25	0:18	0
002	26-2	26-2	20	Auto	Auto	25	25	0:59	0
003	26-3	26-3	20	Heat	Auto	25	25	0:12	0
004	26-4	26-4	20	Auto	Auto	25	25	0:12	0
005	26-5	26-5	20	Auto	Auto	25	25	0:12	0
006	26-6	26-6	20	Auto	Auto	25	25	0:12	0
007	26-7	26-7	20	Cool	Auto	25	25	0:12	0
008	26-8	26-8	20	Auto	Auto	25	25	0:12	0

NEW CENTRALIZED CONTROLLER RWW09

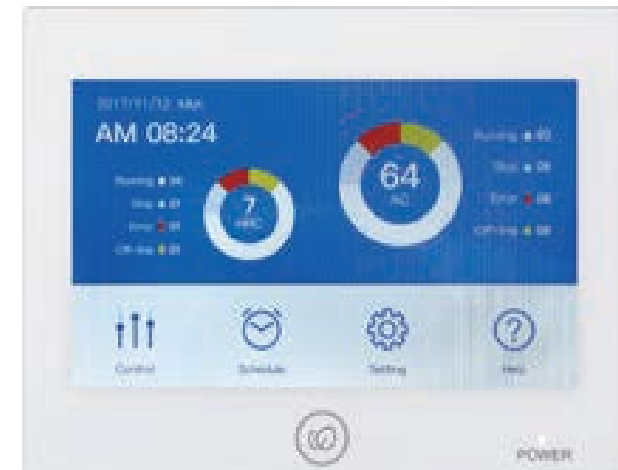
FEATURES

- 5 inch LCD touch screen
- Operation functions (mode, set point, fan speed, ON/OFF)
- Monitoring (error codes, running time, sensors reading)
- Timer function (daily, weekly)
- Setting (screen saving, child lock, back light)



+PRODUCT

- **Up to 64 indoor units**
- **Individual, zones or all units management**
- **3 possible priority managements (LIFO, central, lock)**
- **Output Modbus RTU**
- **Airconnect Smart wifi compatible in native**



AIRCONNECT SMART APPLICATION & WIFI MODULE

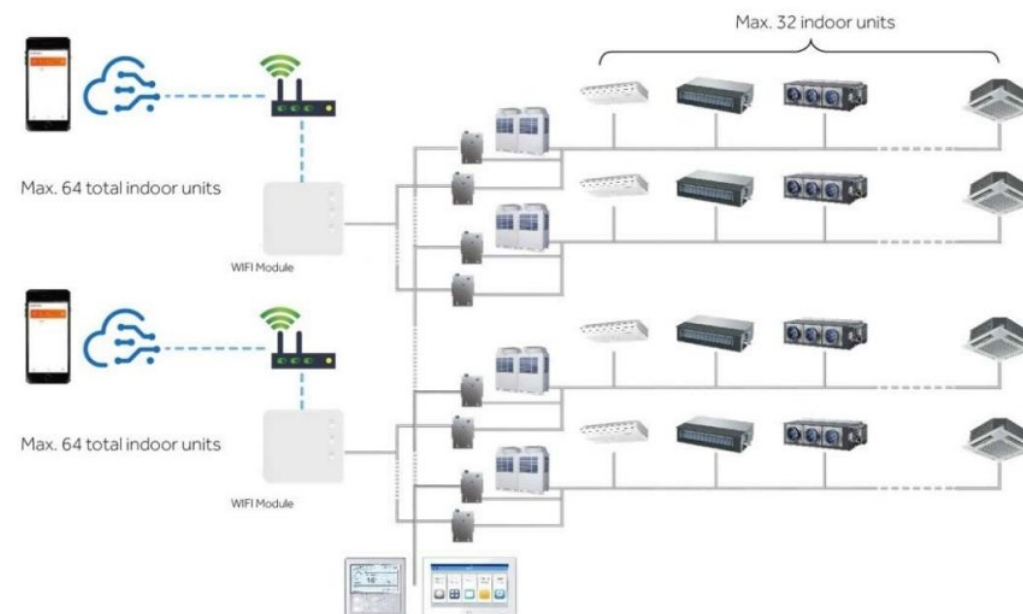


AirConnect Smart is the ideal solution to control your VRF system from your smartphone or tablet.



+PRODUCT

- Up to 32 indoor units per system and 64 UI per module limited to 8 gateway
- A single module to pair and control the whole Airwell VRF system.
- Compatible with RW09/06 controller hub.
- Multi-site management from your user account.
- Possibility to add other connected devices

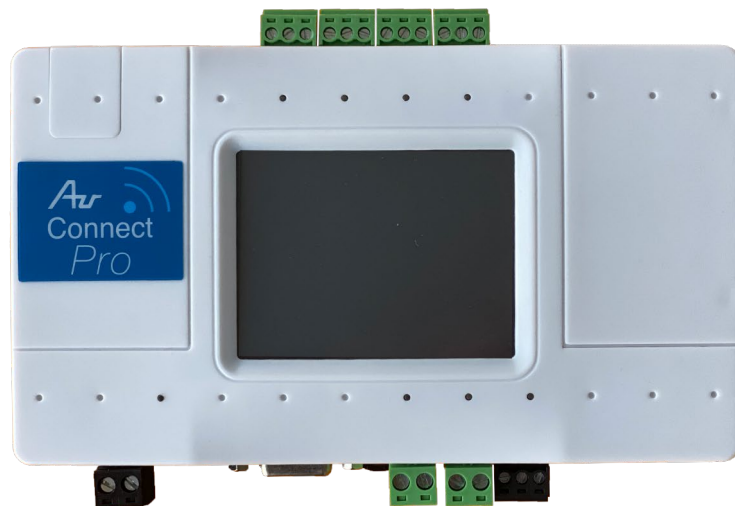


AIRCONNECT PRO : THE PROFESSIONAL RESPONSE

Preventive maintenance solution for endless confort

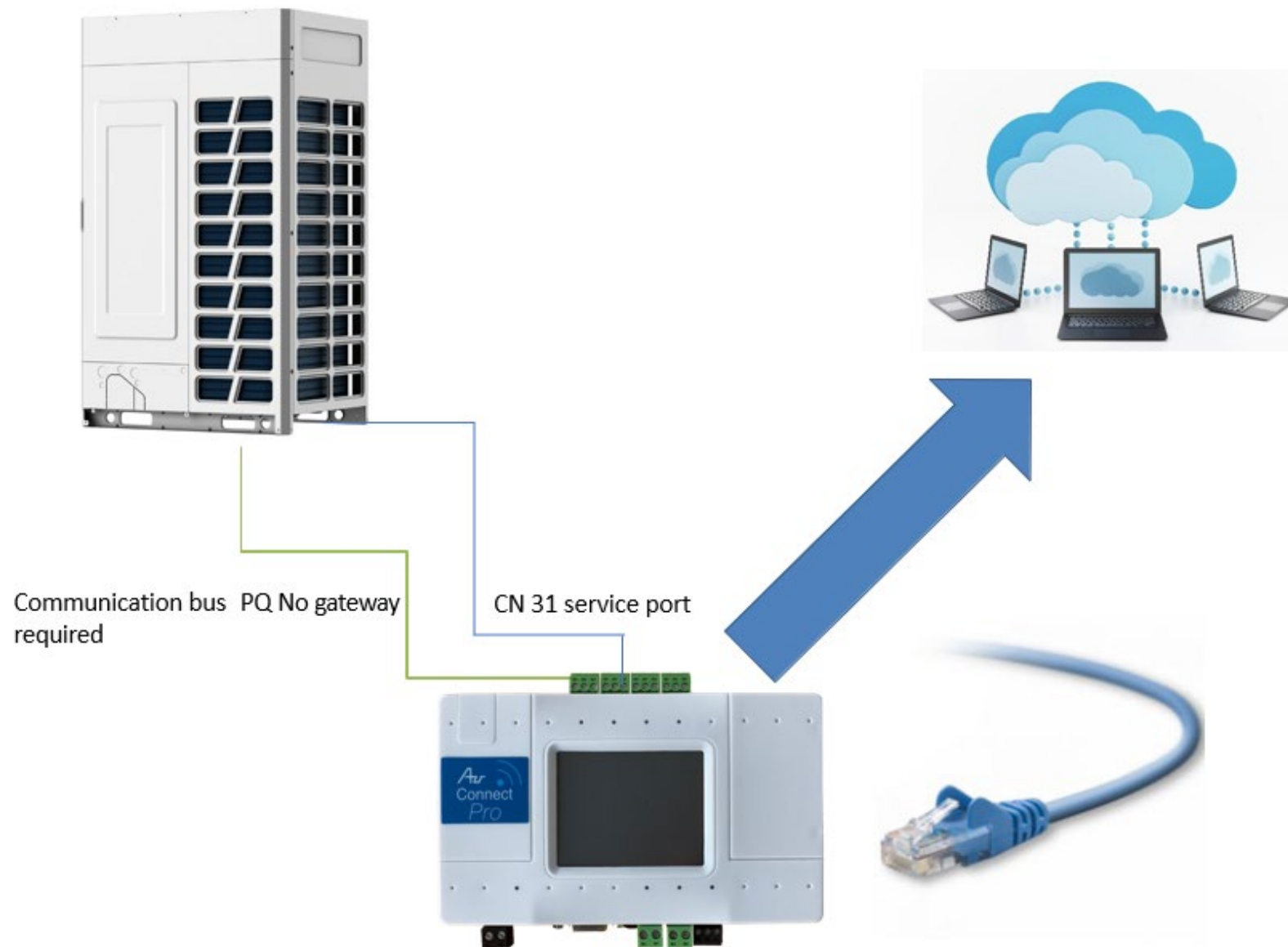
The package includes:

- The Cloud Box: Communication interface between the DRV and the cloud (up to 2 VRF systems and 128 indoor units)
- A perpetual control license for Internal Control App units
- 1 year subscription to the Service App solution (to renew every year)



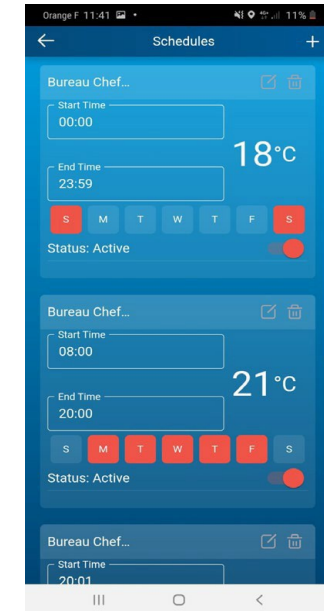
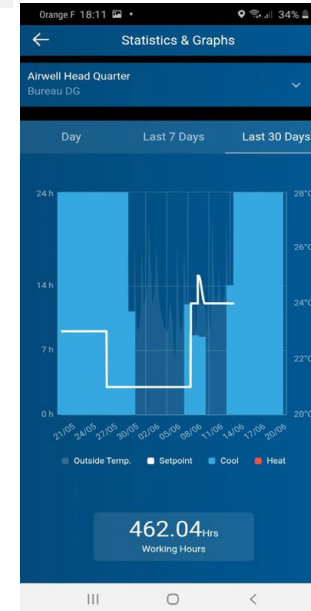
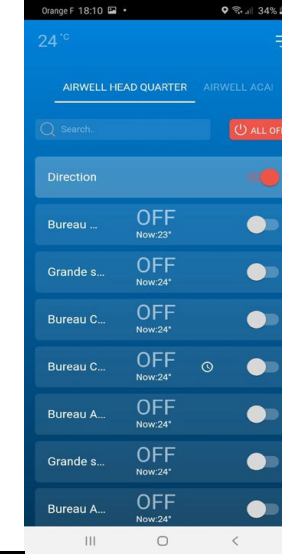
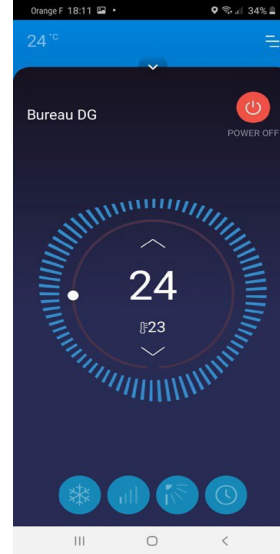


PLUG & PLAY SOLUTION



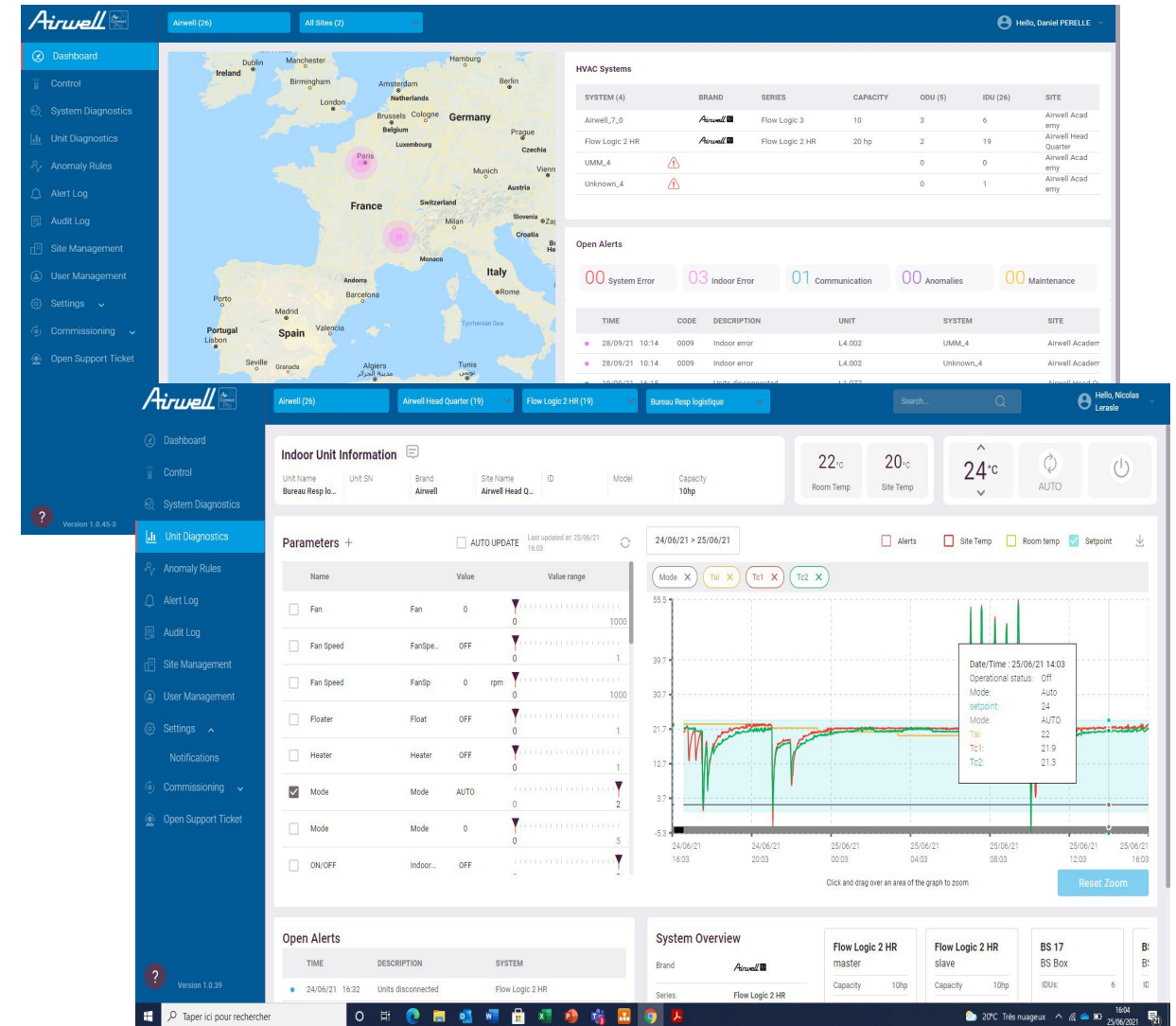
CONTROL APP SMARTPHONE & WEBSERVER

- Settings
- Modes, Fan Speeds, Volets
- "Family sharing"
- Multi-site
- Timer
- Indication of error codes
- Basic usage reports



SERVICE SOLUTION

- Graphic dashboard with overall site status
- Remote diagnostic tools
- Access to all system variables
- Operating settings and complete history
- Trends and drifts
- Detection of anomalies and personalization of anomalies
- Email/text maintenance notifications
- Unit/user audit
- Predictive maintenance analysis
- Export tools
- Multilingual languages: FR, EN, ALL, NL, ESP, PORT



AIRCONNECT PRO



INSTALLER BENEFIT



- **Compatible with all products in the DRV range**
- **No integrator required**
- **Preventive maintenance**
- **No communication gateway**
- **Access to all system operating parameters**
- **Multisite management**
- **Priority access**
- **Solution Plug and Play**

FINAL CUSTOMERS BENEFITS



- **Connected solution for control: webserver and smartphone application**
- **Serenity: preventive maintenance with customizable alert management.**
- **Safety: 24/7 follow up, 365 d/year**
- **Monitoring: Dashboard and graphical and historical monitoring**
- **Energy count (coming soon)**
- **Timer function**

THANK YOU

The logo for Airwell, featuring the word "Airwell" in a stylized, italicized, blue font. The letters are connected, giving it a sense of motion or flow.

Airwell

CREATOR OF SMART ENERGY SOLUTIONS